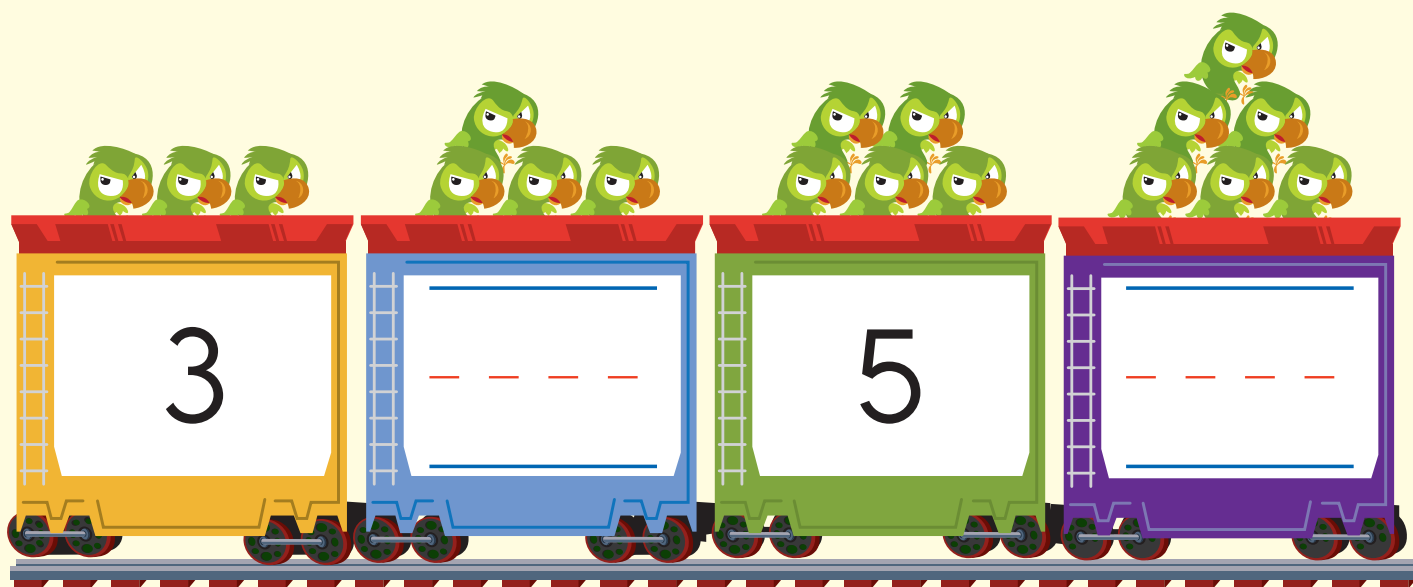
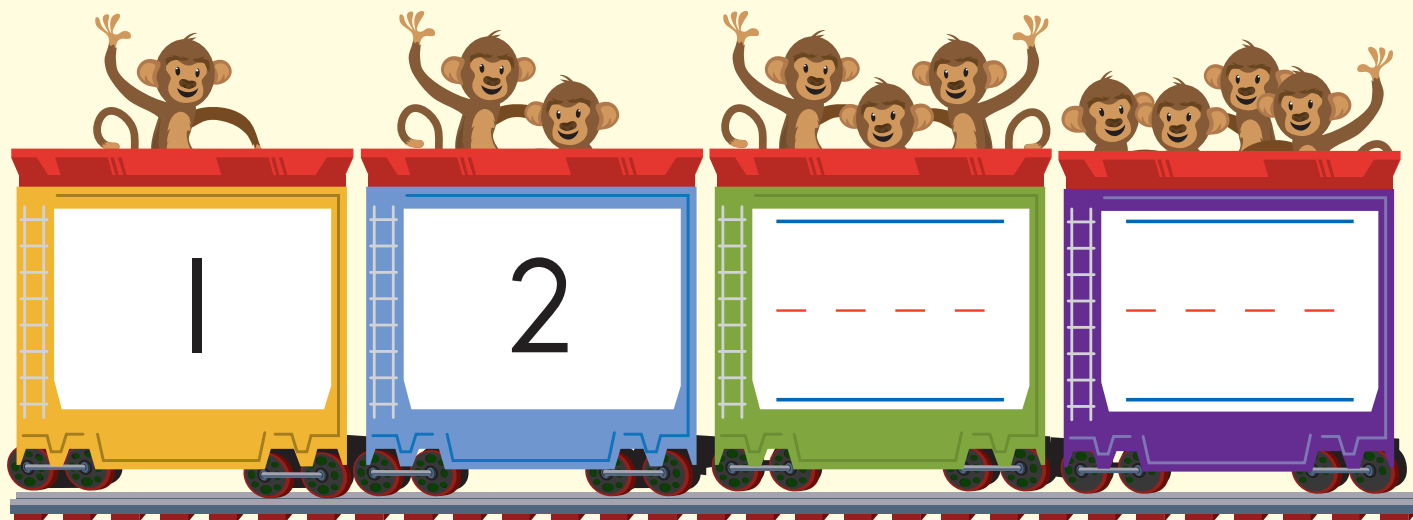
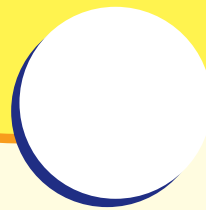


# Number Patterns

## Cargo Train

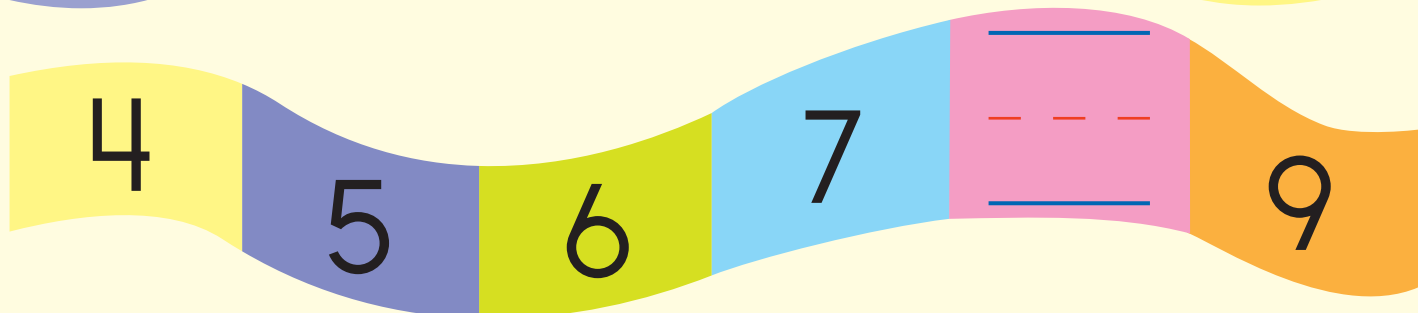
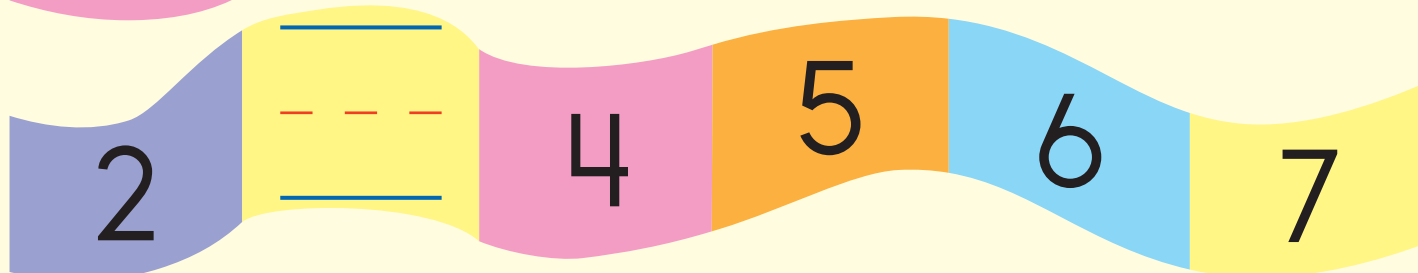
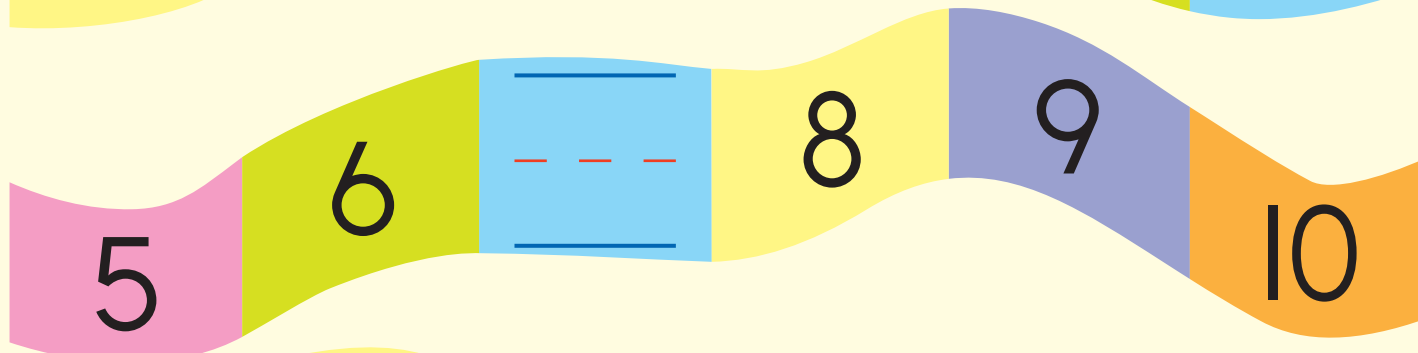
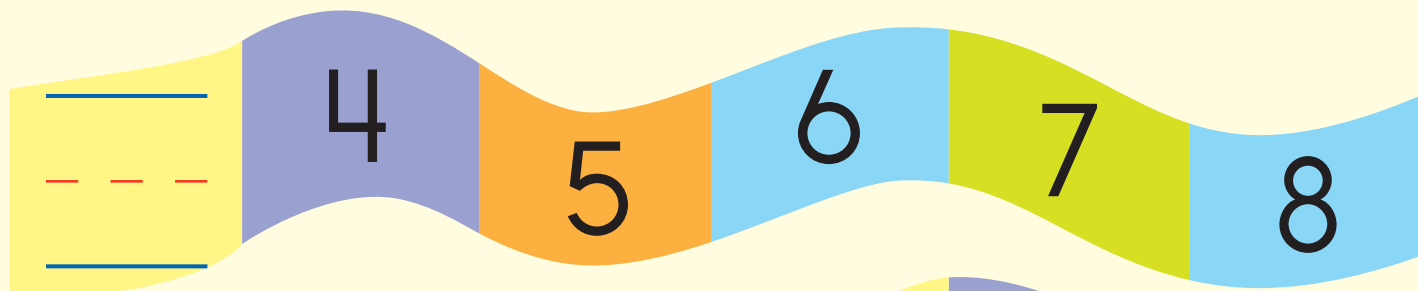
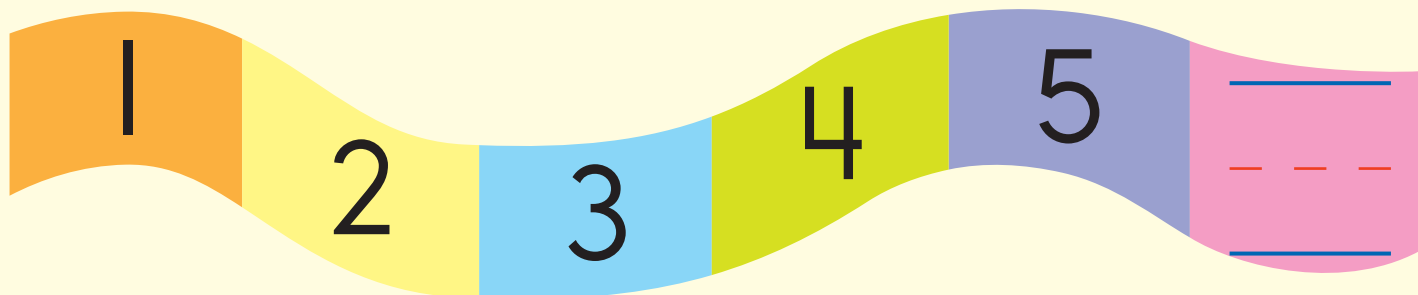
WRITE the missing numbers to complete each pattern.





## Number Paths

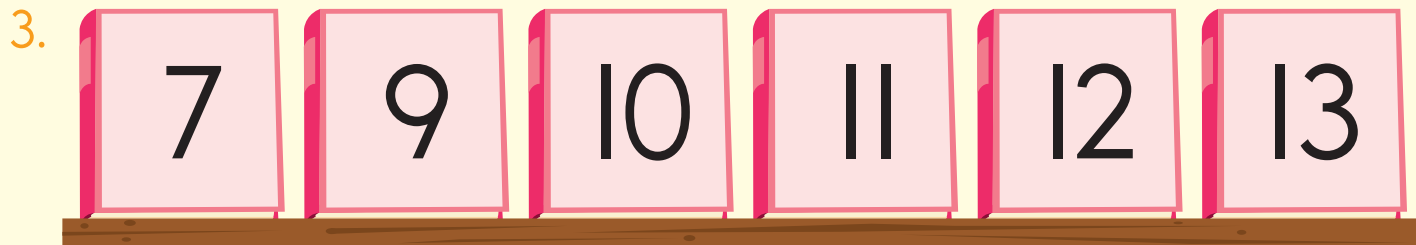
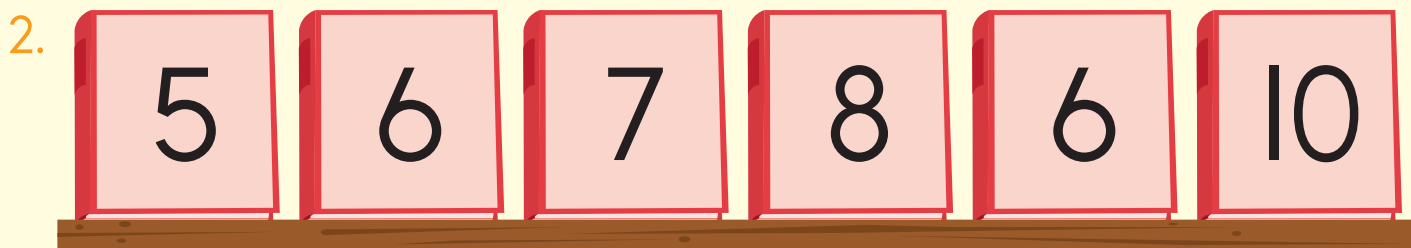
WRITE the missing numbers to complete each pattern.

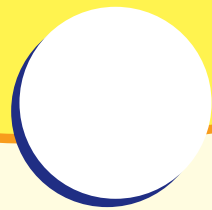


# Number Patterns

## Shelf Switcheroo

There's one book out of place in each row. CIRCLE the book with the wrong number.





## Number Paths

WRITE the missing numbers to complete each pattern.

1  
2  
  
4  
5  
  
7  
8  
9

5  
  
7  
8  
  
10  
11  
  
13

7  
8  
9  
  
11  
12  
  
14

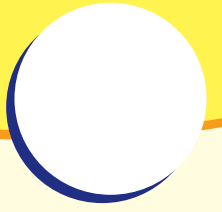
12  
13  
14  
  
16  
17  
  
19

# Number Patterns

## What Floor, Please?

WRITE the missing numbers next to the elevator buttons.

|   |   |   |   |  |   |
|---|---|---|---|--|---|
| 16  |    | <input type="text"/>  |    | 18   |    |
| 13  |    | 14  |    | <input type="text"/>   |    |
| 10  |   | <input type="text"/>  |   | 12   |   |
| <input type="text"/>  |  | 8   |  | 9  |  |
| 4   |  | <input type="text"/>  |  | 6  |  |
| 1   |  | 2   |  | <input type="text"/>   |  |
|  |   |  |   |  |   |



## Number Paths

WRITE the missing numbers to complete the pattern.

The path consists of the following segments and numbers:

- Orange: 1
- Light Blue: 2
- Lime Green:
- Pink: 4
- Yellow: 5
- Purple: 6
- Orange:
- Light Blue: 8
- Lime Green:
- Pink: 10
- Yellow:
- Purple:
- Orange: 13
- Light Blue: 14
- Lime Green: 15
- Pink:
- Yellow: 17
- Purple: 18
- Orange:
- Light Blue: 20